

Oggetto
AMPLIAMENTO DEL PARCHEGGIO DI SCAMBIO
INTEGRATO CHIATALO

PROGETTO ESECUTIVO

Titolo elaborato Edificio - Carpenteria travi All.ri 10-11 e sezioni delle travi		Codice EG STR 6,4
II Commisario Delegato Sindaco di Napoli on. Rosa Terenziello Russo	II Soggetto Attuatore on. Luigi Massaro	
Responsabile Unico del Procedimento Ing. Gianfranco Pomilio	Progettisti Ing. Florenzo De Cicco Ing. Rodolfo Fiesceno arch. Armando Tagliapietra	
data SETTEMBRE 2009	revisione	0 scala 1/50-1/10

CARATTERISTICHE DEI MATERIALI

ANGLOMERATO CEMENTIZIO - C 25/30

Charakteristische

Rapporto Acqua/Cemento = 0,45

Aditivo superfluidificante
slump

Scasseratura

Stagionatura = 28 giorni

Resistenza cubica caratteristica = 30 MPa

aggio per 1 mc di calcestruzzo

Inerte calcareo a spigoli vivi $D_{\max} = 2,5 \text{ cm}$: 0,8 m

Inerte calcareo a spigoli $D_{\max} = 1,0 \text{ cm}$: 0,4 mc
Sabbione bianco : 0,4 mc

Cemento tipo 425 : 300 kg

Acqua : 135 litri

ACCIAIO IN BARRE PER CEMENTO ARMATO - B450CC

Charakteristische

Tensione caratteristica di snervamento	: 450 MPa
Funzione caratteristica di rottura	:

Modulo elastico normale : 210000 MPa

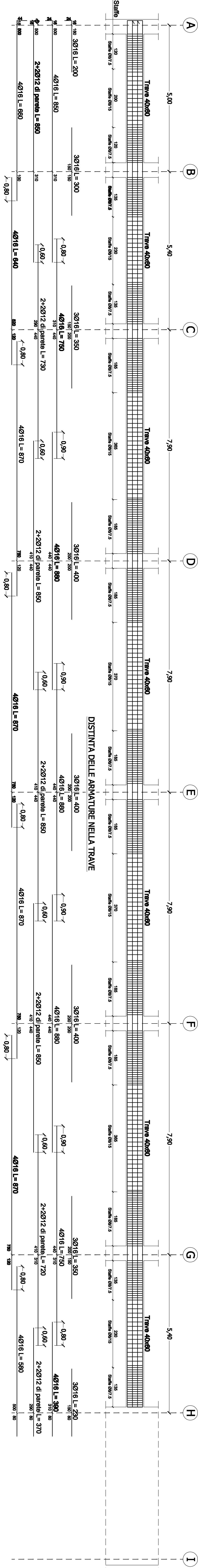
Allungamento (con frattile del 10%) : > 7,5 %

Diametro del mandrino di piegamento : 4 ϕ per barre ϕ 8-10-12
Diametro del mandrino di ricomando : E ϕ 12,5 ϕ 16 ϕ 20 ϕ 25 ϕ 30 ϕ 36 ϕ 42 ϕ 48 ϕ 54 ϕ 60 ϕ 66 ϕ 72 ϕ 78 ϕ 84 ϕ 90 ϕ 96 ϕ 102 ϕ 108 ϕ 114 ϕ 120 ϕ 126 ϕ 132 ϕ 138 ϕ 144 ϕ 150 ϕ 156 ϕ 162 ϕ 168 ϕ 174 ϕ 180 ϕ 186 ϕ 192 ϕ 198 ϕ 204 ϕ 210 ϕ 216 ϕ 222 ϕ 228 ϕ 234 ϕ 240 ϕ 246 ϕ 252 ϕ 258 ϕ 264 ϕ 270 ϕ 276 ϕ 282 ϕ 288 ϕ 294 ϕ 300 ϕ 306 ϕ 312 ϕ 318 ϕ 324 ϕ 330 ϕ 336 ϕ 342 ϕ 348 ϕ 354 ϕ 360 ϕ 366 ϕ 372 ϕ 378 ϕ 384 ϕ 390 ϕ 396 ϕ 402 ϕ 408 ϕ 414 ϕ 420 ϕ 426 ϕ 432 ϕ 438 ϕ 444 ϕ 450 ϕ 456 ϕ 462 ϕ 468 ϕ 474 ϕ 480 ϕ 486 ϕ 492 ϕ 498 ϕ 504 ϕ 510 ϕ 516 ϕ 522 ϕ 528 ϕ 534 ϕ 540 ϕ 546 ϕ 552 ϕ 558 ϕ 564 ϕ 570 ϕ 576 ϕ 582 ϕ 588 ϕ 594 ϕ 600 ϕ 606 ϕ 612 ϕ 618 ϕ 624 ϕ 630 ϕ 636 ϕ 642 ϕ 648 ϕ 654 ϕ 660 ϕ 666 ϕ 672 ϕ 678 ϕ 684 ϕ 690 ϕ 696 ϕ 702 ϕ 708 ϕ 714 ϕ 720 ϕ 726 ϕ 732 ϕ 738 ϕ 744 ϕ 750 ϕ 756 ϕ 762 ϕ 768 ϕ 774 ϕ 780 ϕ 786 ϕ 792 ϕ 798 ϕ 804 ϕ 810 ϕ 816 ϕ 822 ϕ 828 ϕ 834 ϕ 840 ϕ 846 ϕ 852 ϕ 858 ϕ 864 ϕ 870 ϕ 876 ϕ 882 ϕ 888 ϕ 894 ϕ 900 ϕ 906 ϕ 912 ϕ 918 ϕ 924 ϕ 930 ϕ 936 ϕ 942 ϕ 948 ϕ 954 ϕ 960 ϕ 966 ϕ 972 ϕ 978 ϕ 984 ϕ 990 ϕ 996 ϕ 1000

Diametro del manichino di piegamento : 2 ψ per dalle ψ 16-20

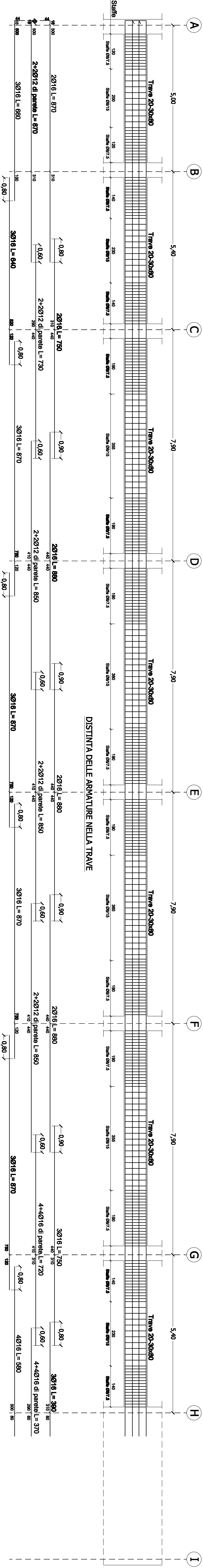
TRAVE ALL.TO 10
SCALA 1:50

SCALA 1:50



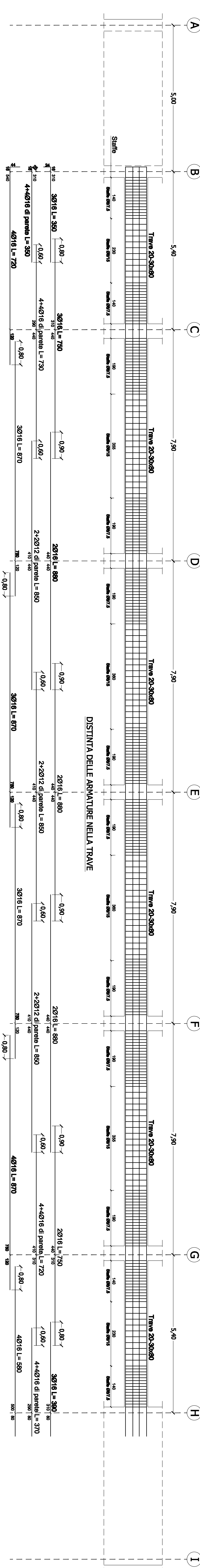
TRAVE ALL.TO 11 A QUOTA 6.30m

SCALA 1:50



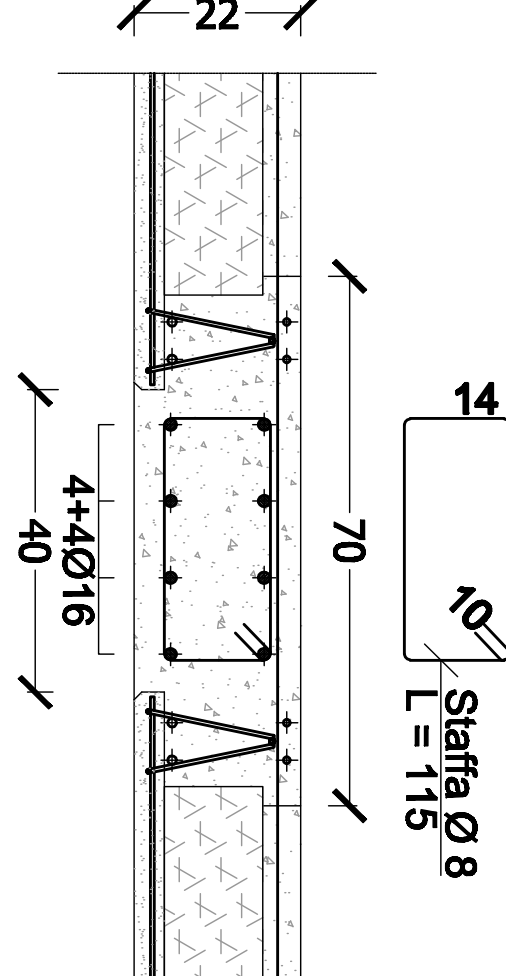
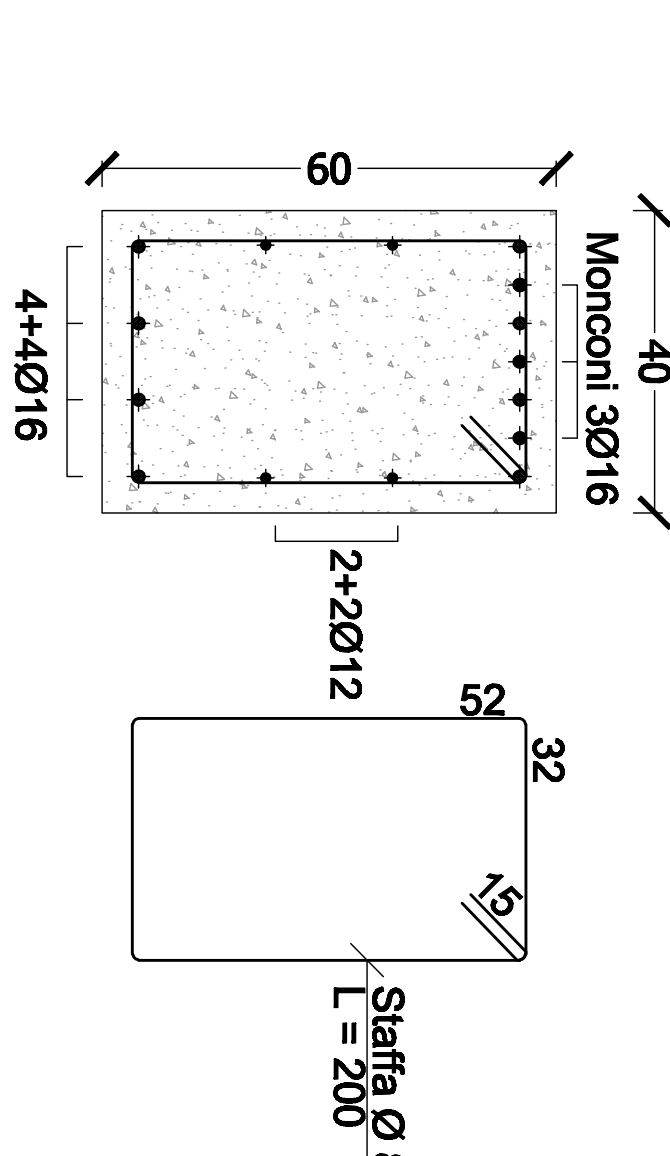
TRAVE ALL.TO 11 A QUOTA 0.00m E 3.10m

SCALA 1:50



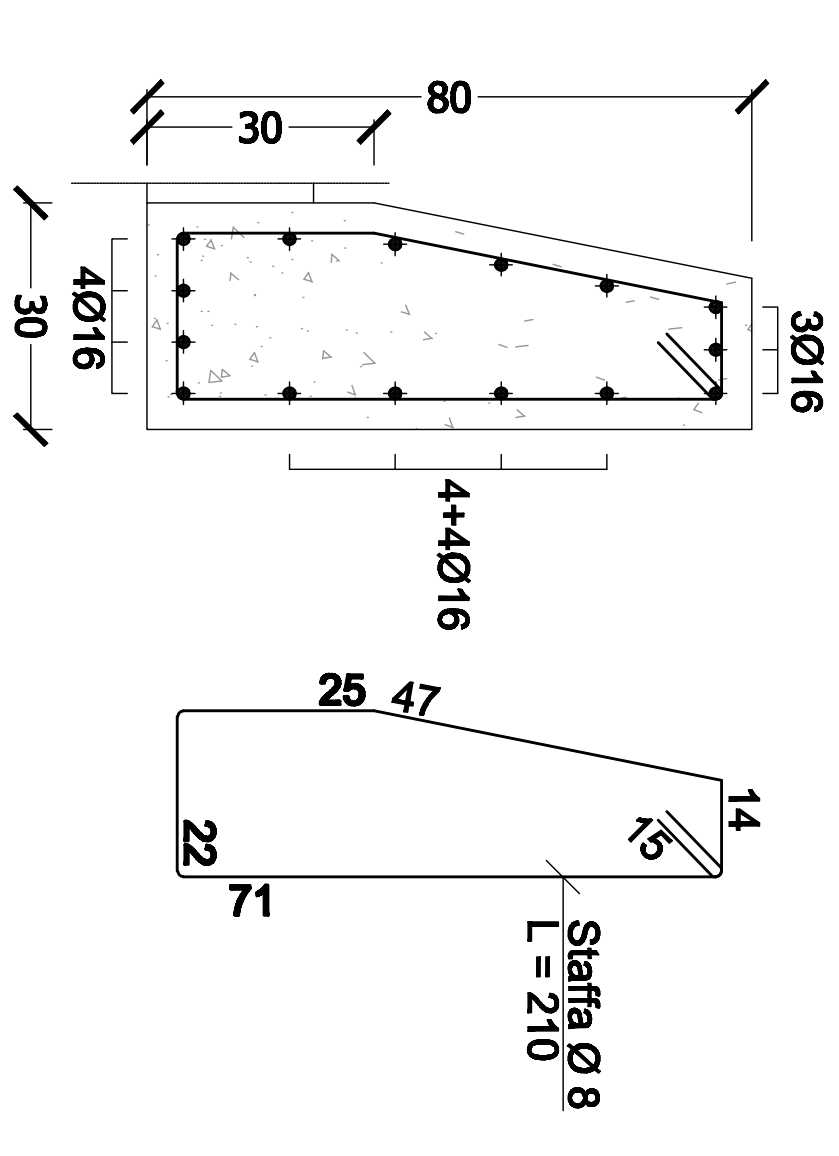
TRAVE 70x22
SCALA 1:10

SCALA

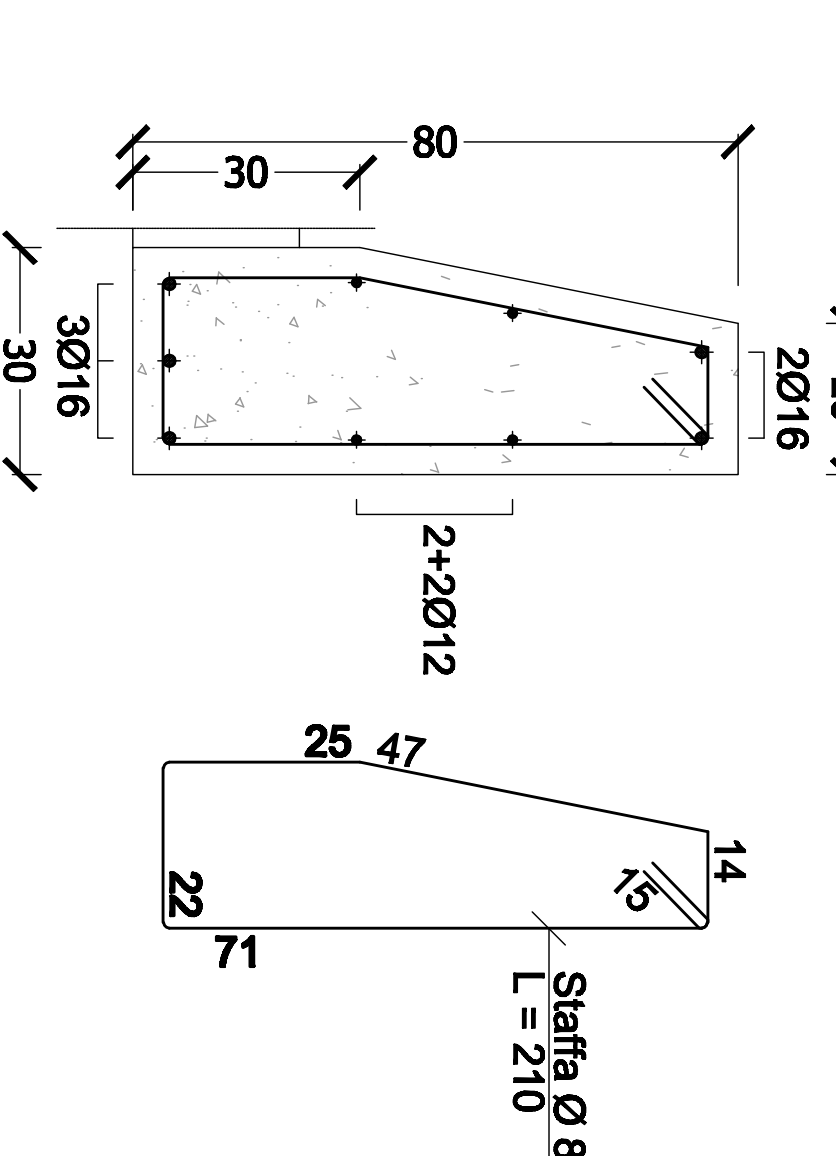
RAVE 40x60
ALA 1-10RAVE -
ALA 1-10

RAVE 20-30X80 adiacente al Sett
SALA 1:10

SCALA 1:10

RAVE 20-30x81
CALA 1:10

SCALE 1:10



RAVE 60x37

RAVE

